

American Chamber of Commerce in Poland
presents:

U.S. COMPANIES IN POLAND



AMERICAN INVESTMENTS AS AN IMPORTANT CONTRIBUTION TO THE POLISH ECONOMY

- 1 Germany
- 2 United States
- 3 France
- 4 Netherlands
- 5 UK

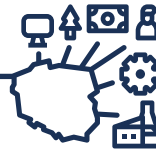
#2

American companies are the second largest group of foreign investors in Poland



1576

NUMBER OF COMPANIES
at the end of 2021 were owned by 935
US-based entities (ultimate owners)



4.1%

**EQUIVALENT
OF POLISH GDP**

REVENUE

\$69 Billion

84% GROWTH SINCE 2010



INVESTMENTS

\$26.1 Billion

81% GROWTH SINCE 2010



EMPLOYMENT

327 Thousands

181% GROWTH SINCE 2010



ASSETS

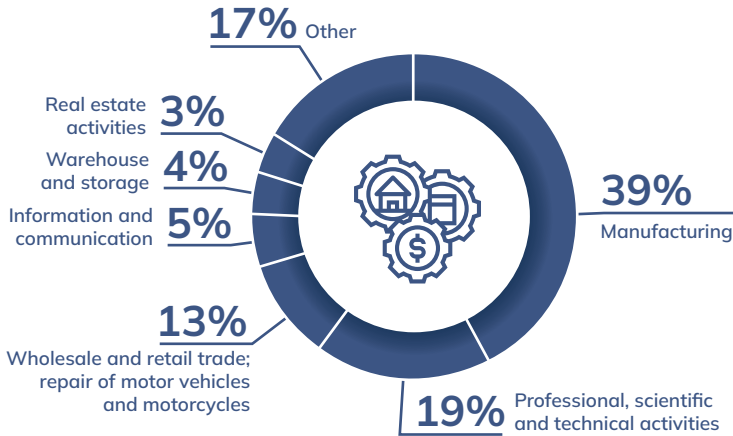
\$58.9 Billion

80% GROWTH SINCE 2010



SECTORAL STRUCTURE OF AMERICAN BUSINESS IN POLAND

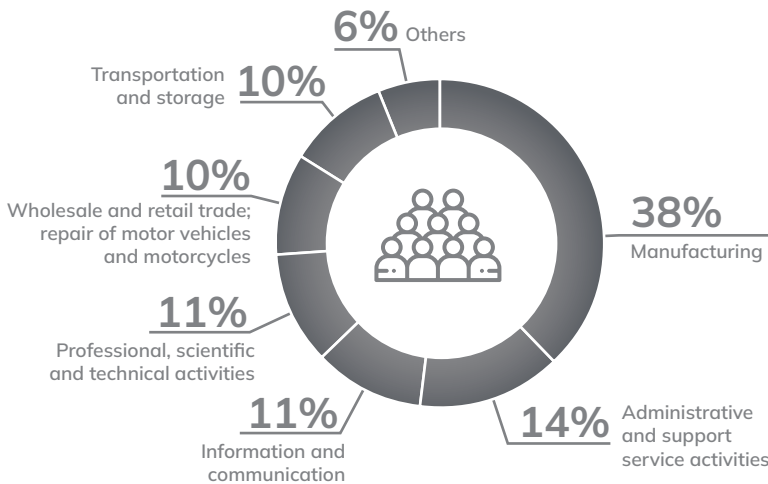
ASSETS
\$58.9 BILLION



MAJOR CATEGORIES IN MANUFACTURING

Manufacture of air and spacecraft and related machinery	6%
Manufacture of light metal packaging	13%
Manufacture of other parts and accessories for motor vehicles	15%

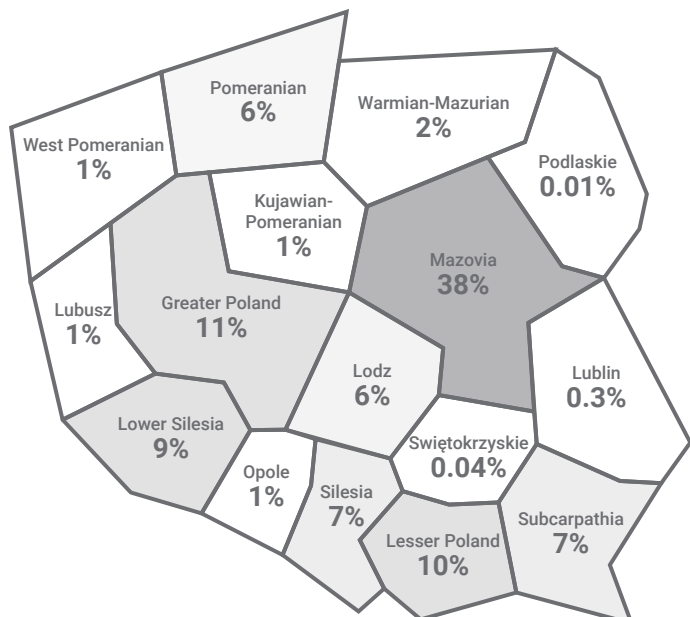
EMPLOYMENT
327 THOUSAND



MAJOR CATEGORIES IN MANUFACTURING

Manufacture of engines and turbines	2%
Manufacture of air and spacecraft and related machinery	2%
Manufacture of other parts and accessories for motor vehicles	7%

REGIONAL ALLOCATION OF EMPLOYMENT



TOP10

by OPERATING REVENUE



- GIORGI GLOBAL HOLDING** CANPACK FOOD AND INDUSTRIAL PACKAGING SP. Z O.O., CANPACK METAL CLOSURES SP. Z O.O., CANPACK RECYCLING SP. Z O.O., CANPACK S.A., CP GLASS S.A.
- CVC CAPITAL PARTNERS** PKP ENERGETYKA S.A., ŻABKA POLSKA SP. Z O.O.
- PHILIP MORRIS INTERNATIONAL, INC** PHILIP MORRIS POLSKA DISTRIBUTION SP. Z O.O., PHILIP MORRIS POLSKA TOBACCO SP. Z O.O., PMI SERVICE CENTER EUROPE SP. Z O.O.
- CARGILL, INC** CARGILL POLAND SP. Z O.O., DELACON POLSKA SP. Z O.O., KONSPOŁ HOLDING SP. Z O.O., SMET CHOCOLATES POLAND SP. Z O.O.
- WHIRLPOOL CORP** WHIRLPOOL COMPANY POLSKA SP. Z O.O., WHIRLPOOL POLSKA APPLIANCES SP. Z O.O.
- PEPSICO, INC** FRITO LAY POLAND SP. Z O.O., FRITO LAY SP. Z O.O., PEPSI-COLA GENERAL BOTTLERS POLAND SP. Z O.O., PEPSICO CONSULTING POLSKA SP. Z O.O., PEPSICO GLOBAL BUSINESS SERVICES POLAND SP. Z O.O., PEPSICO LOGISTYKA SP. Z O.O.
- MARS FAMILY** MARS POLSKA SP. Z O.O., ROYAL CANIN DYSTRYBUJCA SP. Z O.O., ROYAL CANIN POLSKA SP. Z O.O.
- AMAZON.COM, INC** AMAZON CORPORATE SERVICES POLAND SP. Z O.O., AMAZON CS POLAND SP. Z O.O., AMAZON DEVELOPMENT CENTER POLAND SP. Z O.O., AMAZON FULFILLMENT POLAND SP. Z O.O., AMAZON WEB SERVICES POLAND SP. Z O.O., TWITCH POLAND SP. Z O.O.
- COMMERCIAL METALS CO** CMC POLAND SP. Z O.O., CMC PUTEX SP. Z O.O.
- GENERAL ELECTRIC COMPANY** AVIO POLSKA SP. Z O.O., GE INVESTMENTS POLAND SP. Z O.O., GE MEDICAL SYSTEMS POLSKA SP. Z O.O., GE POWER SP. Z O.O., GENERAL ELECTRIC COMPANY POLSKA SP. Z O.O., GENERAL ELECTRIC POLAND SP. Z O.O., LABORATORIUM BADAN NAPIEDOW LOTNICZYCH POLONIA AERO SP. Z O.O., LM WIND POWER BLADES (POLAND) SP. Z O.O., UNISON ENGINE COMPONENTS POLAND SP. Z O.O.

TOP10

by INVESTMENTS



- GIORGI GLOBAL HOLDING.** CANPACK FOOD AND INDUSTRIAL PACKAGING SP. Z O.O., CANPACK METAL CLOSURES SP. Z O.O., CANPACK RECYCLING SP. Z O.O., CANPACK S.A., CP GLASS S.A.
- WARNER BROS. DISCOVERY, INC** DISCOVERY POLSKA SP. Z O.O., GREEN CONTENT SP. Z O.O., HBO POLSKA SP. Z O.O., SCRIPPS NETWORKS POLSKA SP. Z O.O., STAVKA SP. Z O.O., TURNER BROADCASTING SYSTEM POLAND SP. Z O.O., TVN MEDIA SP. Z O.O., TVN S.A., WARNER BROS. ENTERTAINMENT POLSKA SP. Z O.O.
- MONDELEZ INTERNATIONAL, INC** JACOBS DOUWE EGBERTS PL SP. Z O.O., LU POLSKA SP. Z O.O., MONDELEZ INTERNATIONAL RD&Q SP. Z O.O., MONDELEZ POLSKA PRODUCTION SP. Z O.O., MONDELEZ POLSKA SP. Z O.O.
- RAYTHEON TECHNOLOGIES CORPORATION** GOODRICH AEROSPACE POLAND SP. Z O.O., HAMILTON SUNDSTRAND POLAND SP. Z O.O., PRATT & WHITNEY RZESZOW S.A., PRATT AND WHITNEY KALISZ SP. Z O.O., RIELLO PALNIKI SP. Z O.O., RUG RIELLO URZADZENIA GRZEWCZE S.A.
- AMAZON.COM, INC** AMAZON CORPORATE SERVICES POLAND SP. Z O.O., AMAZON CS POLAND SP. Z O.O., AMAZON DEVELOPMENT CENTER POLAND SP. Z O.O., AMAZON FULFILLMENT POLAND SP. Z O.O., AMAZON WEB SERVICES POLAND SP. Z O.O., TWITCH POLAND SP. Z O.O.
- PROCTER & GAMBLE CO** GILLETTE POLAND INTERNATIONAL SP. Z O.O., PROCTER & GAMBLE HEALTH POLAND SP. Z O.O., PROCTER AND GAMBLE DS POLSKA SP. Z O.O., PROCTER AND GAMBLE OPERATIONS POLSKA SP. Z O.O., PROCTER AND GAMBLE POLSKA SP. Z O.O.
- LIBERTY GLOBAL** UPC POLSKA SP. Z O.O.
- 3M COMPANY** 3M POLAND MANUFACTURING SP. Z O.O., 3M POLAND SP. Z O.O., 3M SERVICE CENTER EMEA SP. Z O.O., 3M WROCLAW SP. Z O.O.
- COMMERCIAL METALS CO** CMC POLAND SP. Z O.O., CMC PUTEX SP. Z O.O.
- PEPSICO, INC** FRITO LAY POLAND SP. Z O.O., FRITO LAY SP. Z O.O., PEPSI-COLA GENERAL BOTTLERS POLAND SP. Z O.O., PEPSICO CONSULTING POLSKA SP. Z O.O., PEPSICO GLOBAL BUSINESS SERVICES POLAND SP. Z O.O., PEPSICO LOGISTYKA SP. Z O.O.

TOP10

by EMPLOYMENT



- AMAZON.COM, INC** AMAZON CORPORATE SERVICES POLAND SP. Z O.O., AMAZON CS POLAND SP. Z O.O., AMAZON DEVELOPMENT CENTER POLAND SP. Z O.O., AMAZON FULFILLMENT POLAND SP. Z O.O., AMAZON WEB SERVICES POLAND SP. Z O.O., TWITCH POLAND SP. Z O.O.
- CITIGROUP** CITI HANDLOWY, CITI SOLUTIONS CENTER
- INTERNATIONAL BUSINESS MACHINES CORP** IBM BTO BUSINESS CONSULTING SERVICES SP. Z O.O., IBM GLOBAL FINANCING POLSKA SP. Z O.O., IBM POLSKA BUSINESS SERVICES SP. Z O.O., IBM POLSKA SP. Z O.O., RED HAT POLAND SP. Z O.O.
- LEAR CORP** LEAR CORPORATION ENGINEERING POLAND SP. Z O.O., LEAR CORPORATION POLAND II SP. Z O.O.
- RAYTHEON TECHNOLOGIES CORPORATION** GOODRICH AEROSPACE POLAND SP. Z O.O., HAMILTON SUNDSTRAND POLAND SP. Z O.O., PRATT & WHITNEY RZESZOW S.A., PRATT AND WHITNEY KALISZ SP. Z O.O., RIELLO PALNIKI SP. Z O.O., RUG RIELLO URZADZENIA GRZEWCZE S.A.
- KYNDRYL INTERNATIONAL LLC** KYNDRYL GLOBAL SERVICES DELIVERY CENTRE POLSKA SP. Z O.O., KYNDRYL POLSKA BUSINESS SERVICES SP. Z O.O.
- GENERAL ELECTRIC COMPANY** AVIO POLSKA SP. Z O.O., GE INVESTMENTS POLAND SP. Z O.O., GE MEDICAL SYSTEMS POLSKA SP. Z O.O., GE POWER SP. Z O.O., GENERAL ELECTRIC COMPANY POLSKA SP. Z O.O., GENERAL ELECTRIC POLAND SP. Z O.O., LABORATORIUM BADAN NAPIEDOW LOTNICZYCH POLONIA AERO SP. Z O.O., LM WIND POWER BLADES (POLAND) SP. Z O.O., UNISON ENGINE COMPONENTS POLAND SP. Z O.O.
- WHIRLPOOL CORP** WHIRLPOOL COMPANY POLSKA SP. Z O.O., WHIRLPOOL POLSKA APPLIANCES SP. Z O.O.
- GIORGI GLOBAL HOLDING** CANPACK FOOD AND INDUSTRIAL PACKAGING SP. Z O.O., CANPACK METAL CLOSURES SP. Z O.O., CANPACK RECYCLING SP. Z O.O., CANPACK S.A., CP GLASS S.A.
- 3M COMPANY** 3M POLAND MANUFACTURING SP. Z O.O., 3M POLAND SP. Z O.O., 3M SERVICE CENTER EMEA SP. Z O.O., 3M WROCLAW SP. Z O.O.

TOP10

by ASSETS



- CVC CAPITAL PARTNERS** PKP ENERGETYKA S.A., ŻABKA POLSKA SP. Z O.O.
- GIORGI GLOBAL HOLDING** CANPACK FOOD AND INDUSTRIAL PACKAGING SP. Z O.O., CANPACK METAL CLOSURES SP. Z O.O., CANPACK RECYCLING SP. Z O.O., CANPACK S.A., CP GLASS S.A.
- WARNER BROS. DISCOVERY, INC** DISCOVERY POLSKA SP. Z O.O., GREEN CONTENT SP. Z O.O., HBO POLSKA SP. Z O.O., SCRIPPS NETWORKS POLSKA SP. Z O.O., STAVKA SP. Z O.O., TURNER BROADCASTING SYSTEM POLAND SP. Z O.O., TVN MEDIA SP. Z O.O., TVN S.A., WARNER BROS. ENTERTAINMENT POLSKA SP. Z O.O.
- AMAZON.COM, INC** AMAZON CORPORATE SERVICES POLAND SP. Z O.O., AMAZON CS POLAND SP. Z O.O., AMAZON DEVELOPMENT CENTER POLAND SP. Z O.O., AMAZON FULFILLMENT POLAND SP. Z O.O., AMAZON WEB SERVICES POLAND SP. Z O.O., TWITCH POLAND SP. Z O.O.
- MONDELEZ INTERNATIONAL, INC** JACOBS DOUWE EGBERTS PL SP. Z O.O., LU POLSKA SP. Z O.O., MONDELEZ INTERNATIONAL RD&Q SP. Z O.O., MONDELEZ POLSKA PRODUCTION SP. Z O.O., MONDELEZ POLSKA SP. Z O.O.
- GENERAL ELECTRIC COMPANY** AVIO POLSKA SP. Z O.O., GE INVESTMENTS POLAND SP. Z O.O., GE MEDICAL SYSTEMS POLSKA SP. Z O.O., GE POWER SP. Z O.O., GENERAL ELECTRIC COMPANY POLSKA SP. Z O.O., GENERAL ELECTRIC POLAND SP. Z O.O., LABORATORIUM BADAN NAPIEDOW LOTNICZYCH POLONIA AERO SP. Z O.O., LM WIND POWER BLADES (POLAND) SP. Z O.O., UNISON ENGINE COMPONENTS POLAND SP. Z O.O.
- WHIRLPOOL CORP** WHIRLPOOL COMPANY POLSKA SP. Z O.O., WHIRLPOOL POLSKA APPLIANCES SP. Z O.O.
- PEPSICO, INC** FRITO LAY POLAND SP. Z O.O., FRITO LAY SP. Z O.O., PEPSI-COLA GENERAL BOTTLERS POLAND SP. Z O.O., PEPSICO CONSULTING POLSKA SP. Z O.O., PEPSICO GLOBAL BUSINESS SERVICES POLAND SP. Z O.O., PEPSICO LOGISTYKA SP. Z O.O.
- RAYTHEON TECHNOLOGIES CORPORATION** GOODRICH AEROSPACE POLAND SP. Z O.O., HAMILTON SUNDSTRAND POLAND SP. Z O.O., PRATT & WHITNEY RZESZOW S.A., PRATT AND WHITNEY KALISZ SP. Z O.O., RIELLO PALNIKI SP. Z O.O., RUG RIELLO URZADZENIA GRZEWCZE S.A.
- PROCTER&GAMBLE** GILLETTE POLAND INTERNATIONAL SP. Z O.O., PROCTER & GAMBLE HEALTH POLAND SP. Z O.O., PROCTER AND GAMBLE DS POLSKA SP. Z O.O., PROCTER AND GAMBLE OPERATIONS POLSKA SP. Z O.O., PROCTER AND GAMBLE POLSKA SP. Z O.O.

POLAND-U.S. TOTAL TRADE IN MERCHANDISE GOODS (2021): \$15 222 MILLION



EXPORT OF GOODS
\$8 683 MILLION

No. 9 on the list of importing markets from Poland (up from no. 17 in 2010).

Export to the US rose higher than to other exporting markets – annual growth rate of export in 2010-2021: 11%. The significant growth of 19% was indicated since 2020.

The primary group of exporting goods includes Machinery, mechanical appliances, nuclear reactors, boilers; and parts thereof:

- The US is the no. 5 market importing from Poland
- mainly: Parts of turbojets or turbopropellers, n.e.s.; Hearing aids, Metal silver



IMPORT OF GOODS
\$10 371 MILLION

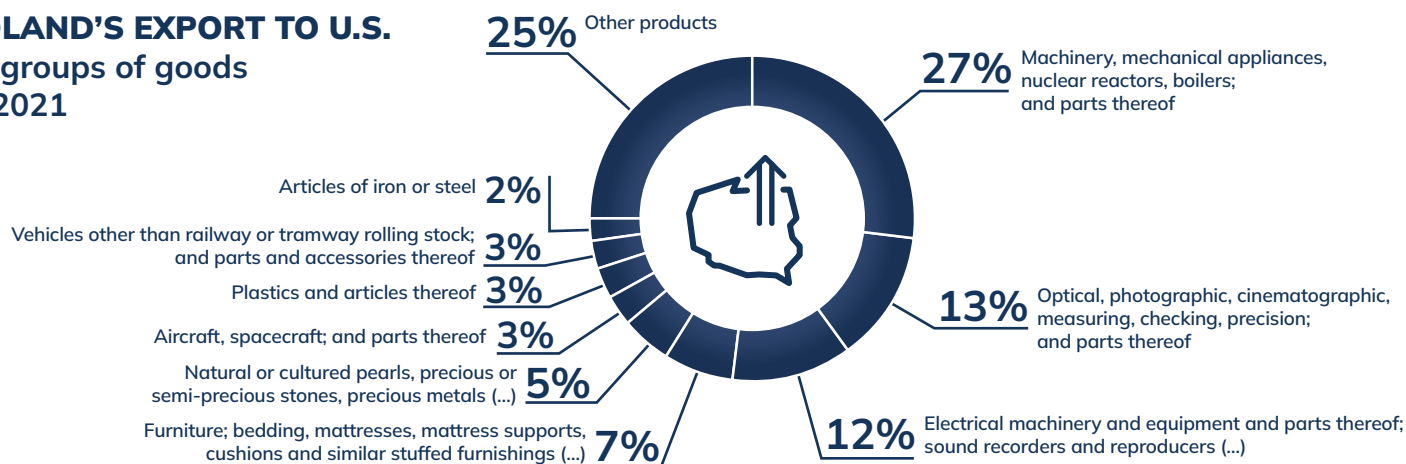
No. 8 on the list of supplying markets to Poland (no. 9 in 2010).

Annual growth rate of import in 2010-2021: 8% and grew by 31% since 2020.

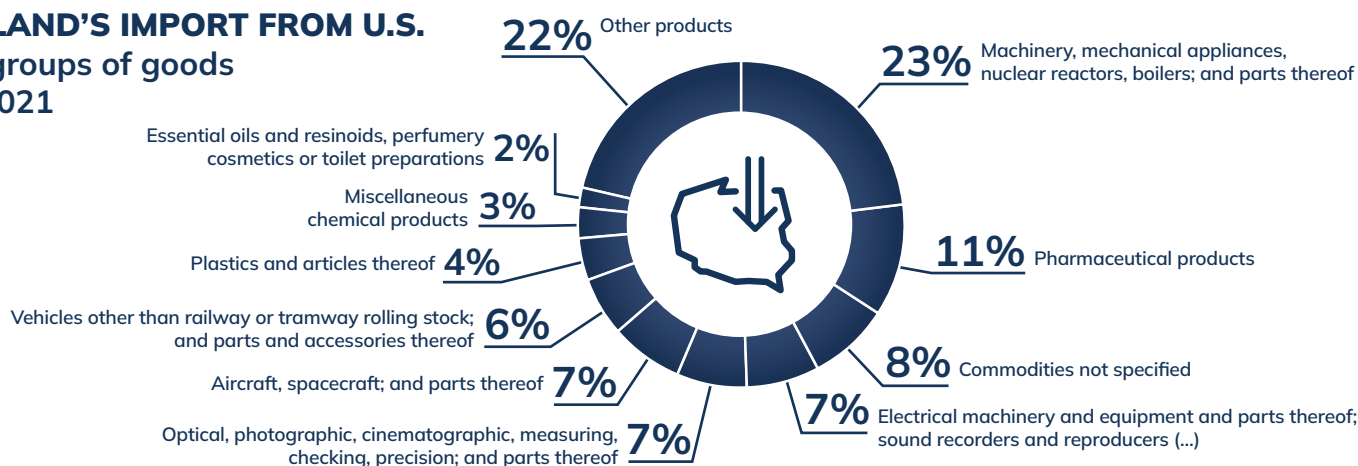
23% of imports are Machinery, mechanical appliances, nuclear reactors, boilers; and parts thereof.

TRADE DEFICIT: \$-1 688 MILLION

POLAND'S EXPORT TO U.S. by groups of goods in 2021



POLAND'S IMPORT FROM U.S. by groups of goods in 2021



POLAND-U.S. TOTAL TRADE IN SERVICES (2021): \$9 230 MILLION



EXPORT OF SERVICES
\$6 708 MILLION

No. 2 on the list of importing markets from Poland (no. 6 in 2010).

Annual growth rate of export in 2010-2021: 14.5%, year-by-year change since 2016: 25%.

Knowledge-intensive business services (ICT, Technical, R&D, Engineering): USD 4.4 billion, which accounts for 65% of Polish export of services to the U.S.



IMPORT OF SERVICES
\$2 522 MILLION

No. 6 on the list of supplying markets (no. 4 in 2010).

Annual growth rate of import in 2010-2021: 4%.

Eliza Przedziecka (D.Sc.)

Chief Economist, American Chamber of Commerce in Poland
T: +48 22 520 59 99, eliza.przedziecka@amcham.pl

